

UNIT NO.S

1002

(4BHK+4T)  
2495 SQ.FT

UNIT NO.S

1003

(3.5BHK+4T)  
2070 SQ.FT

UNIT NO.S

1001

(4BHK+4T)  
2591 SQ.FT

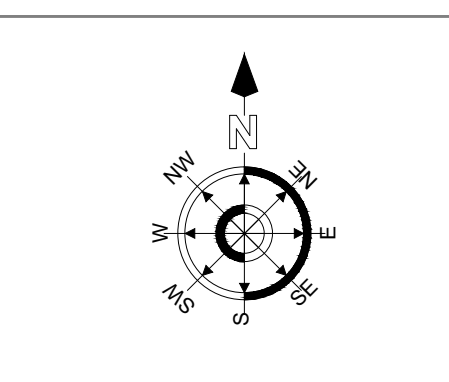


D 25

PH - 1

T - 1

GROUND FLOOR PLAN





UNIT NO.S

1012

(4BHK+4T)  
2495 SQ.FT

UNIT NO.S

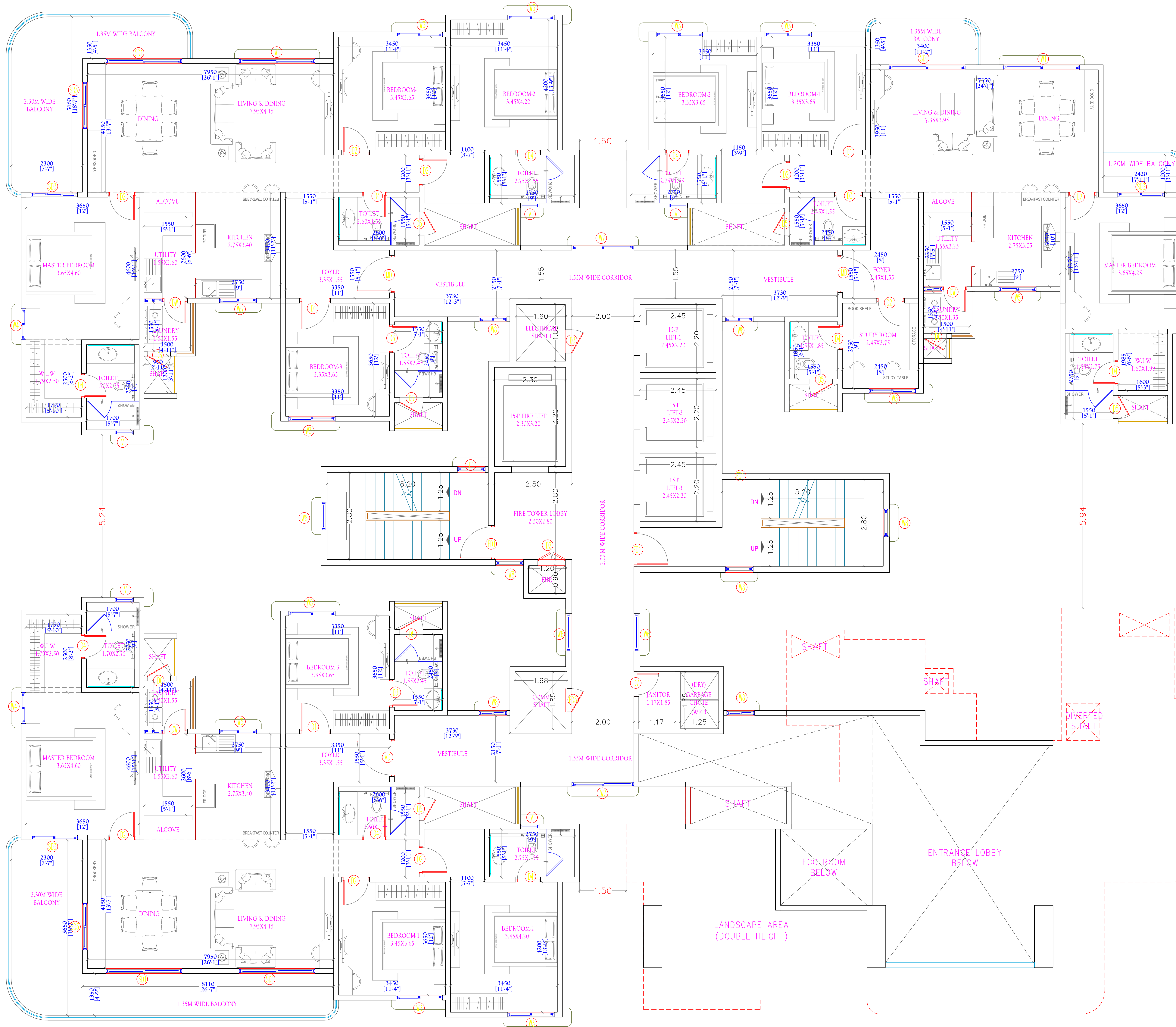
1013

(3.5BHK+4T)  
2070 SQ.FT

UNIT NO.S

1011

(4BHK+4T)  
2591 SQ.FT

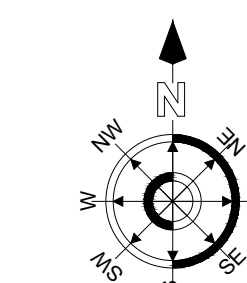


D 25

PH - 1

T - 1

FIRST FLOOR PLAN





**UNIT NO.S**

**1022 - 1152**  
**1172 - 1242**  
**1262 - 1322**

**(4BHK+4T)**  
**2495 SQ.FT**

**UNIT NO.S**

**1023 - 1153**  
**1173 - 1243**  
**1263 - 1323**

**(3.5BHK+4T)**  
**2070 SQ.FT**

**UNIT NO.S**

**1021 - 1151**  
**1171 - 1241**  
**1261 - 1321**

**(4BHK+4T)**  
**2591 SQ.FT**

**UNIT NO.S**

**1024 - 1154**  
**1174 - 1244**  
**1264 - 1324**

**(3.5BHK+4T)**  
**2179 SQ.FT**



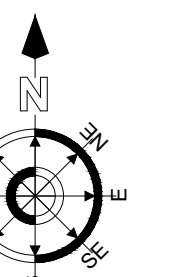
**D 25**

**PH - 1**

**T - 1**

**TYPICAL FLOOR PLAN**

**(2nd to 15th, 17th to 24th, 26th to 32nd flrs)**





**UNIT NO.S**  
**1162 & 1252**

**(4BHK+4T)**  
**2495 SQ.FT**

**UNIT NO.S**  
**1163 & 1253**

**(3.5BHK+4T)**  
**2070 SQ.FT**

**UNIT NO.S**  
**1161 & 1251**

**(4BHK+4T)**  
**2591 SQ.FT**

**UNIT NO.S**  
**1164 & 1254**

**(3.5BHK+4T)**  
**2179 SQ.FT**



**D 25**

**PH - 1**

**T - 1**

**REFUGE FLOOR PLAN**

**(16th & 25th flrs)**

